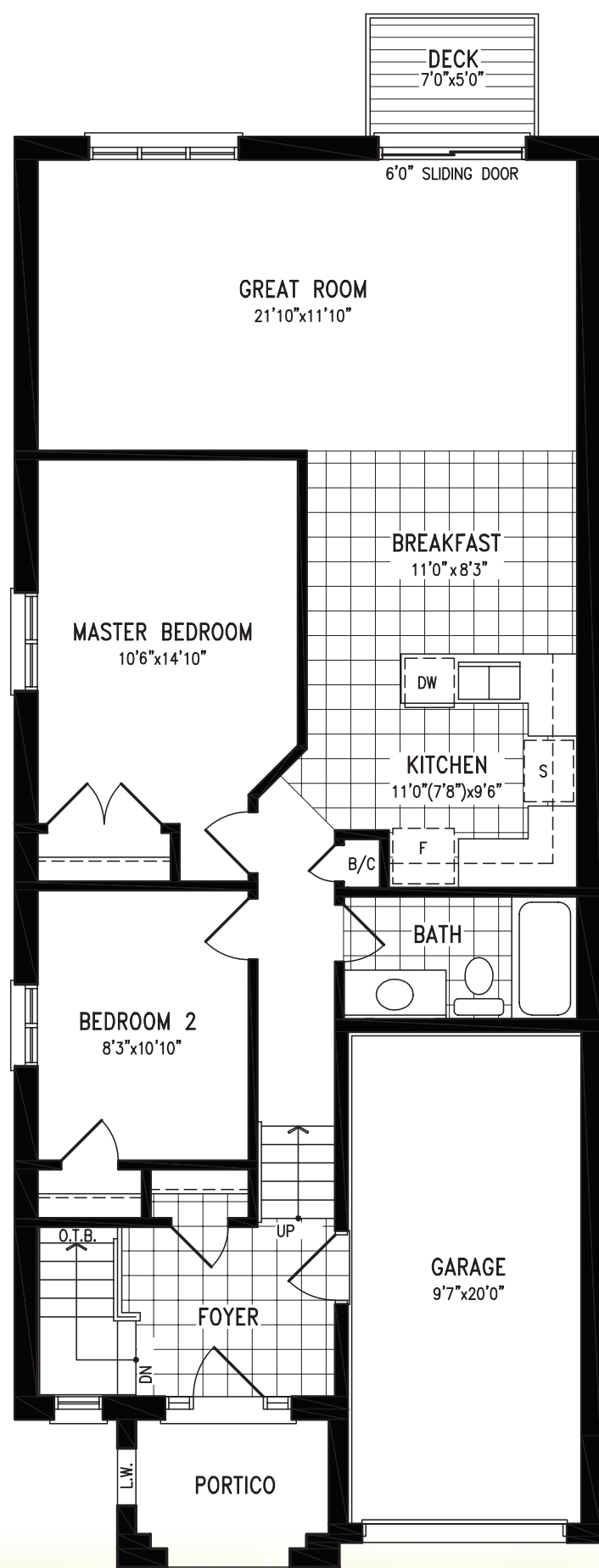


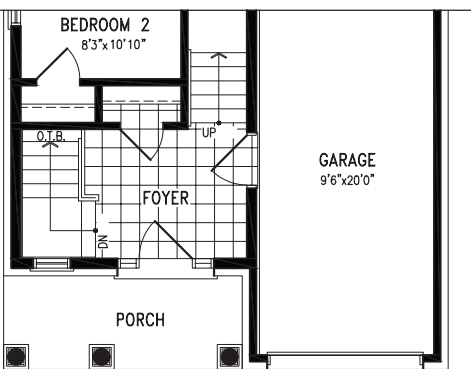
AMESBURY 'A' & 'B' - 1085 SQ. FT.

OPTIONAL W/ FINISHED BASEMENT - 1904 Sq. Ft.

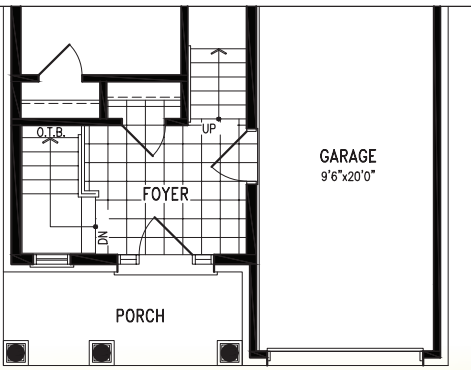
30-PP5



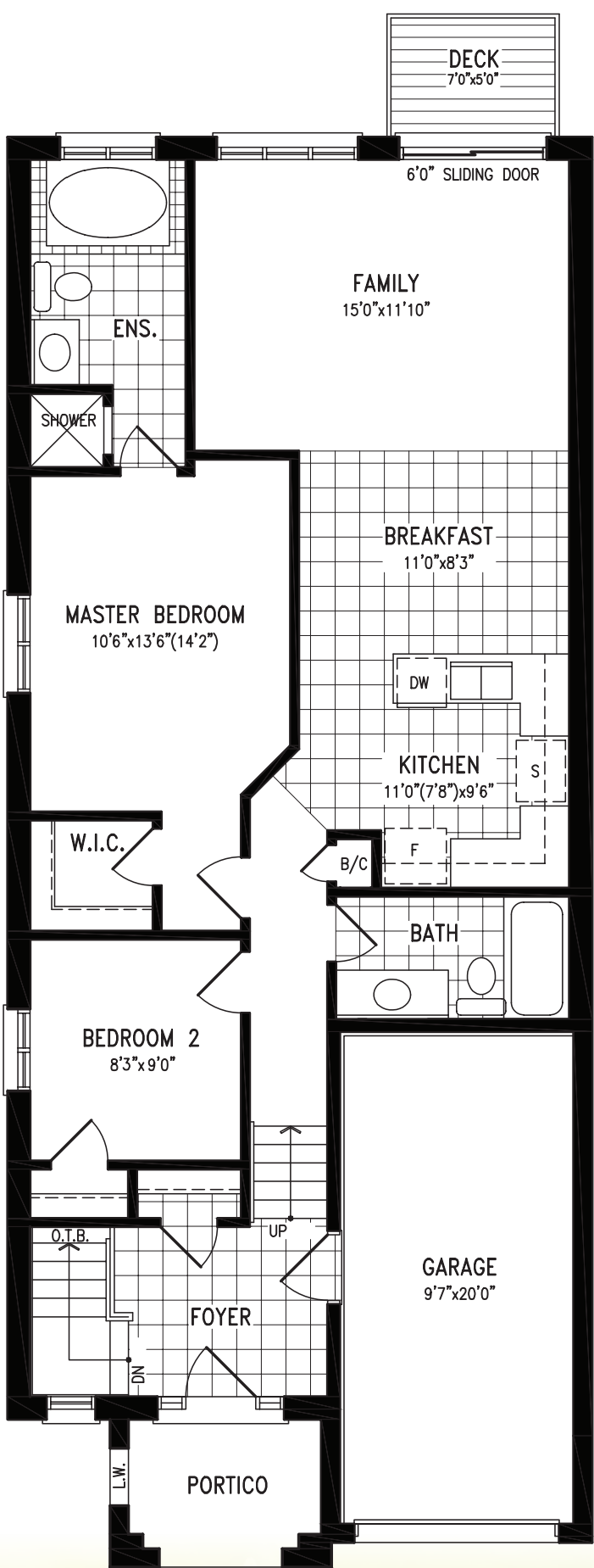
Ground Floor Plan 'A'



Partial Optional Ground Floor Plan 'B'



Partial Ground Floor Plan 'B'

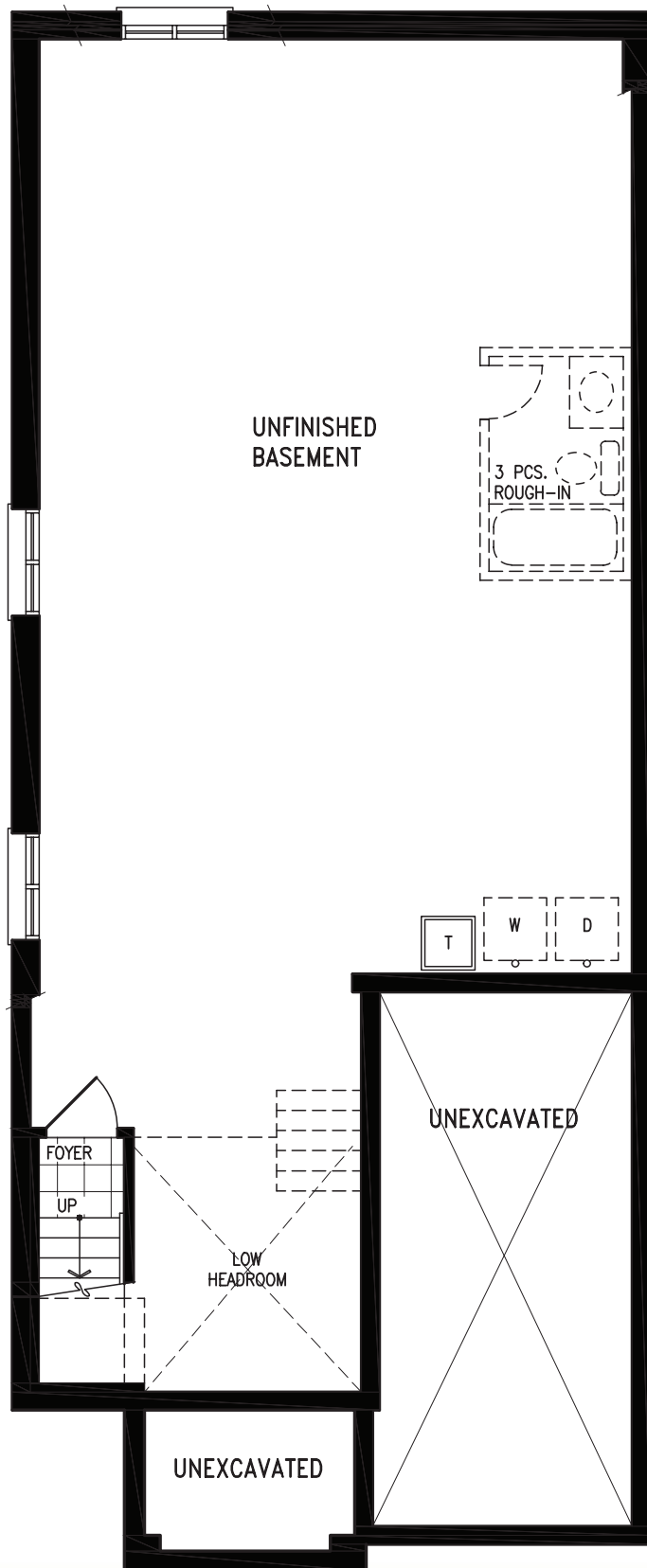


Optional Ground Floor Plan 'A'

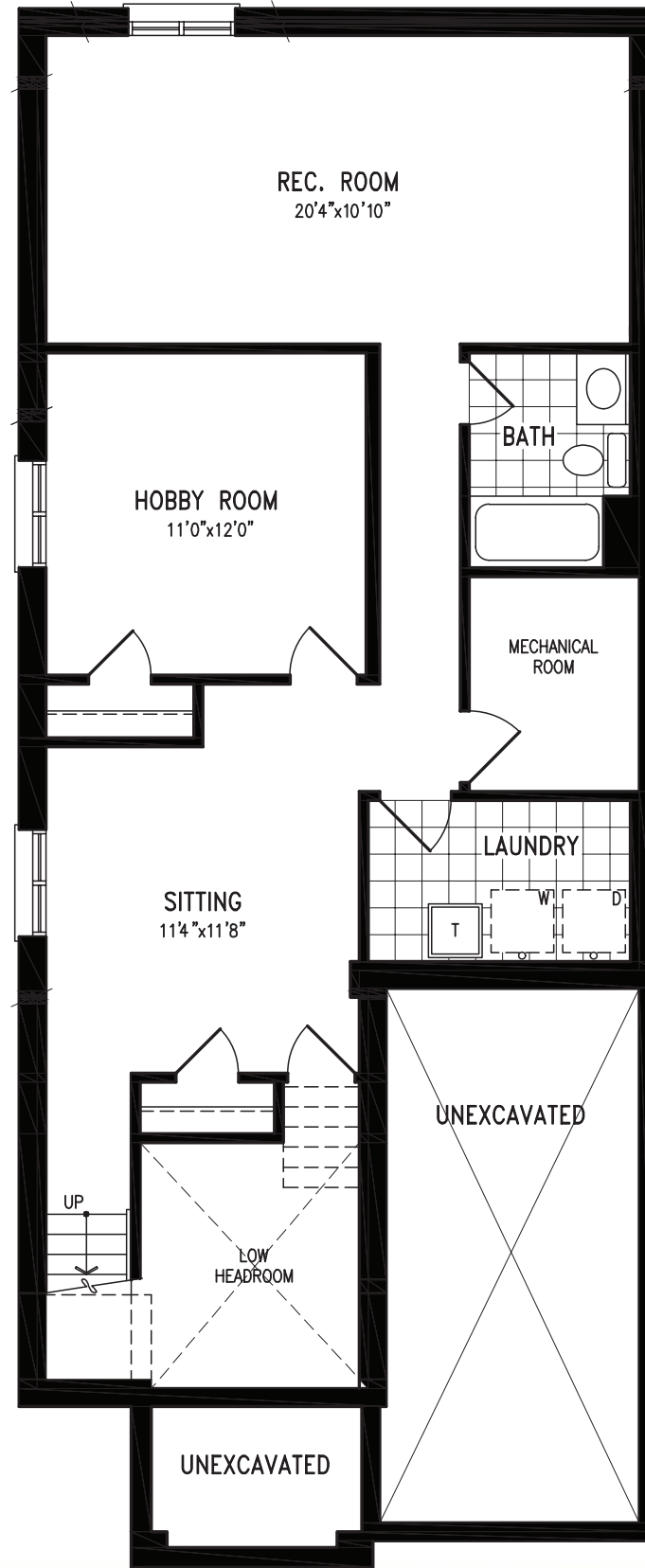
AMESBURY 'A' & 'B' - 1085^{SQ.}_{FT.}

OPTIONAL W/ FINISHED BASEMENT - 1904 Sq. Ft.

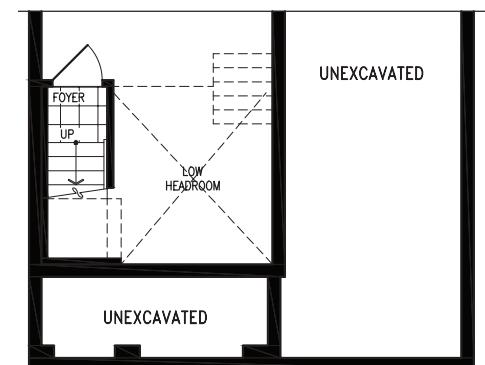
30-PP5



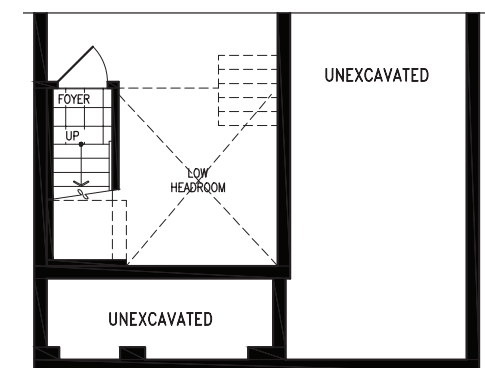
Basement Floor Plan 'A'



Optional Finished Basement Floor Plan 'A'



Partial Basement Floor Plan 'B'



Partial Optional Finished Basement Floor Plan 'B'